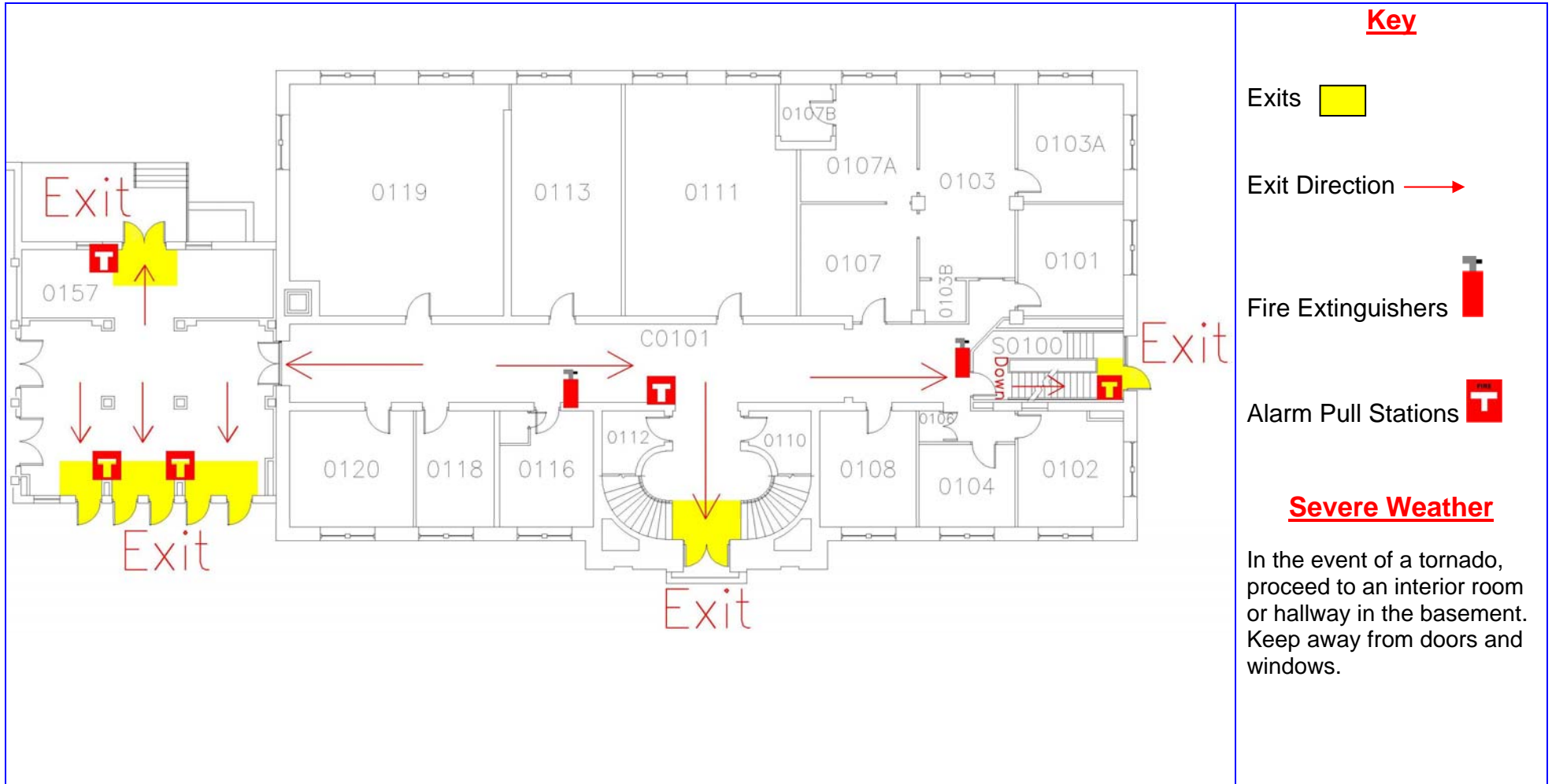



East Hall First Floor Evacuation Map



Key

Exits 

Exit Direction 

Fire Extinguishers 

Alarm Pull Stations 

Severe Weather

In the event of a tornado, proceed to an interior room or hallway in the basement. Keep away from doors and windows.

Evacuation Guidelines

- In case of fire or other emergency requiring evacuation, activate the nearest fire alarm pull station.
- Exit in a calm and orderly fashion. Once you have evacuated to a safe location, immediately call 911.
- Assist injured personnel, if time permits, and make sure all doors are closed and hazardous work operations are shut down as you exit the building.
- Help any physically impaired individuals in need of assistance.
- In case of evacuation, meet by the sculpture south of Ross Hall and east of Curtiss Hall.

Safety Guidelines

- Familiarize yourself with the location of exits, alarm pull stations, and fire extinguishers.
- Attempt to control a fire yourself with a fire extinguisher only when the fire is small and you have been trained.
- Keep fire doors closed to prevent the spread of smoke and fire.